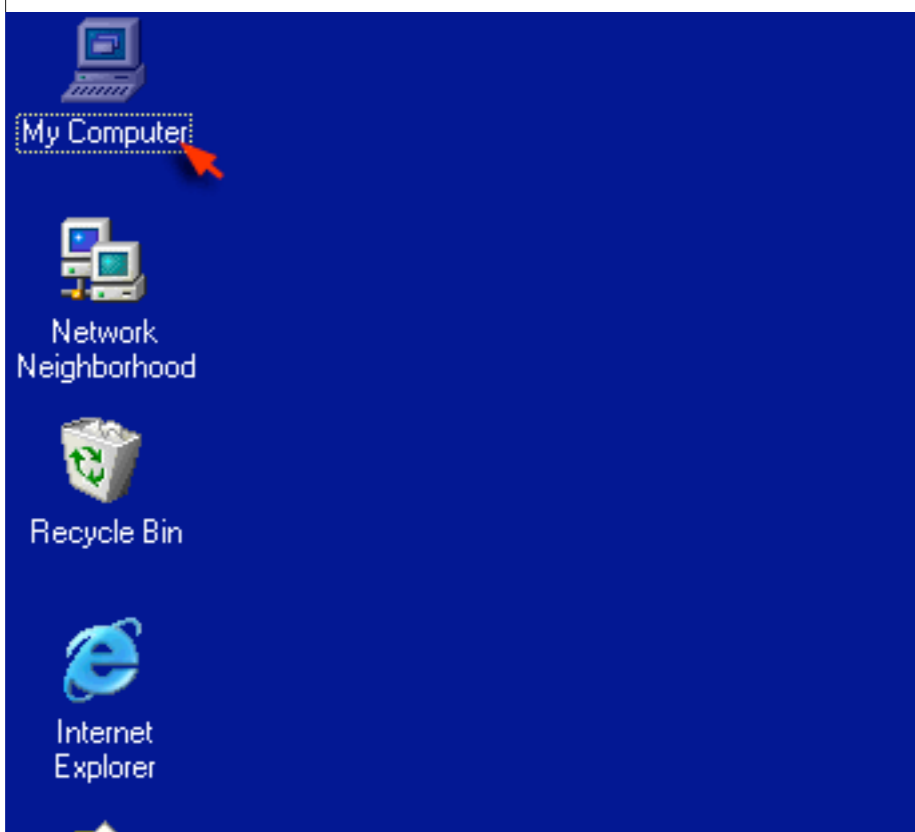


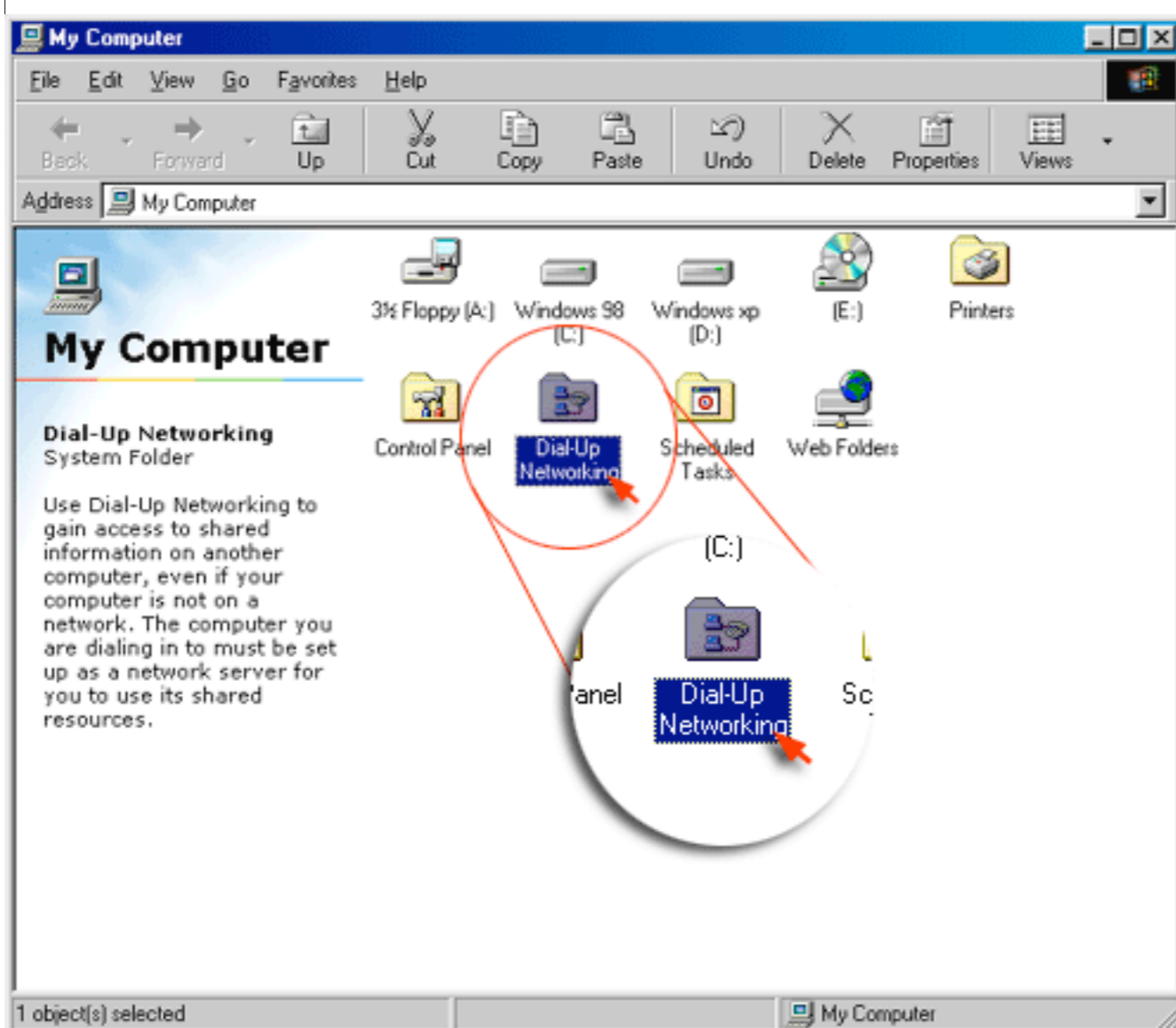
[Back to Support Home](#)

This document will walk you through the steps necessary to connect to our service via a dialup connection.

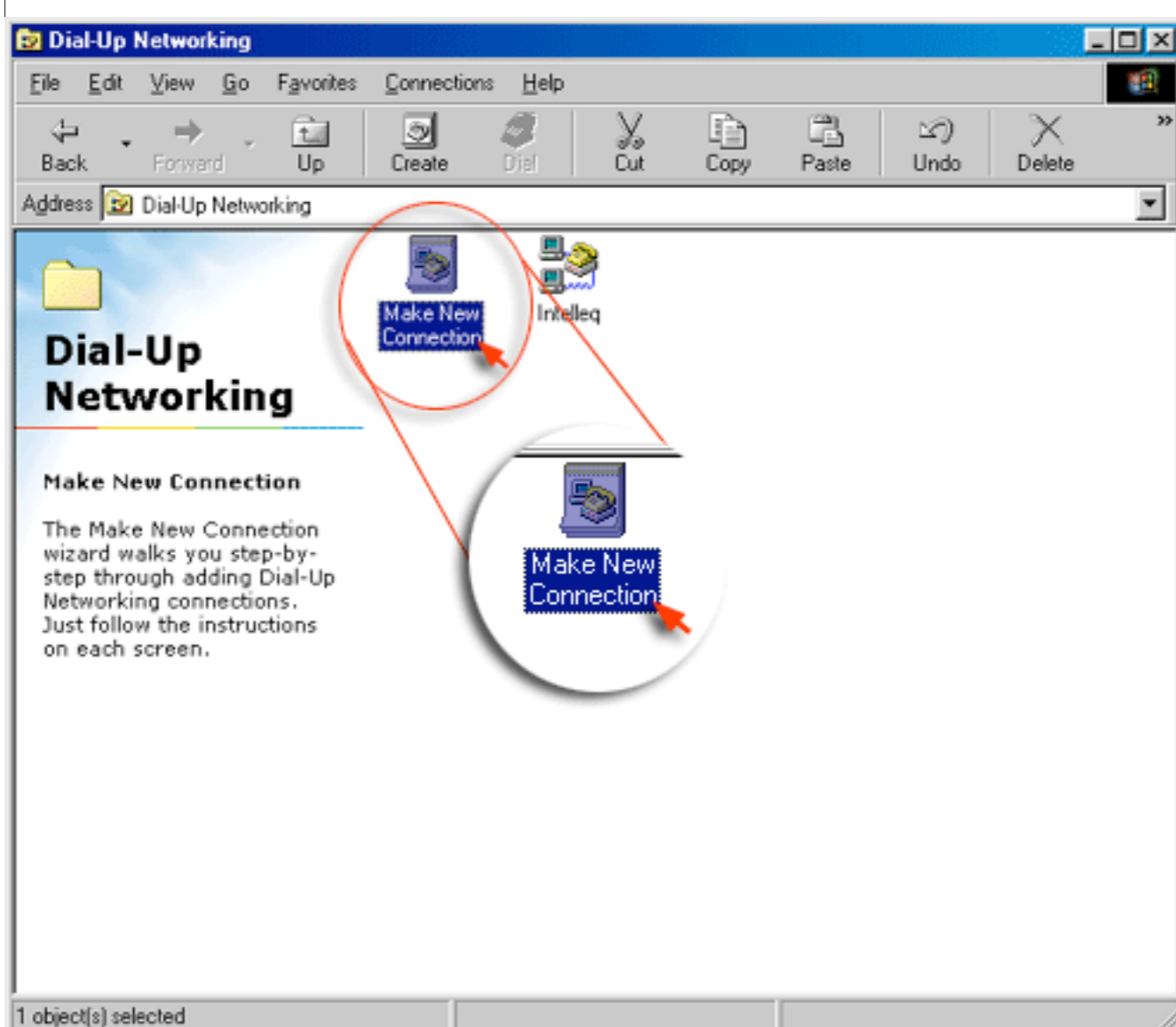
Starting at the Windows Desktop -



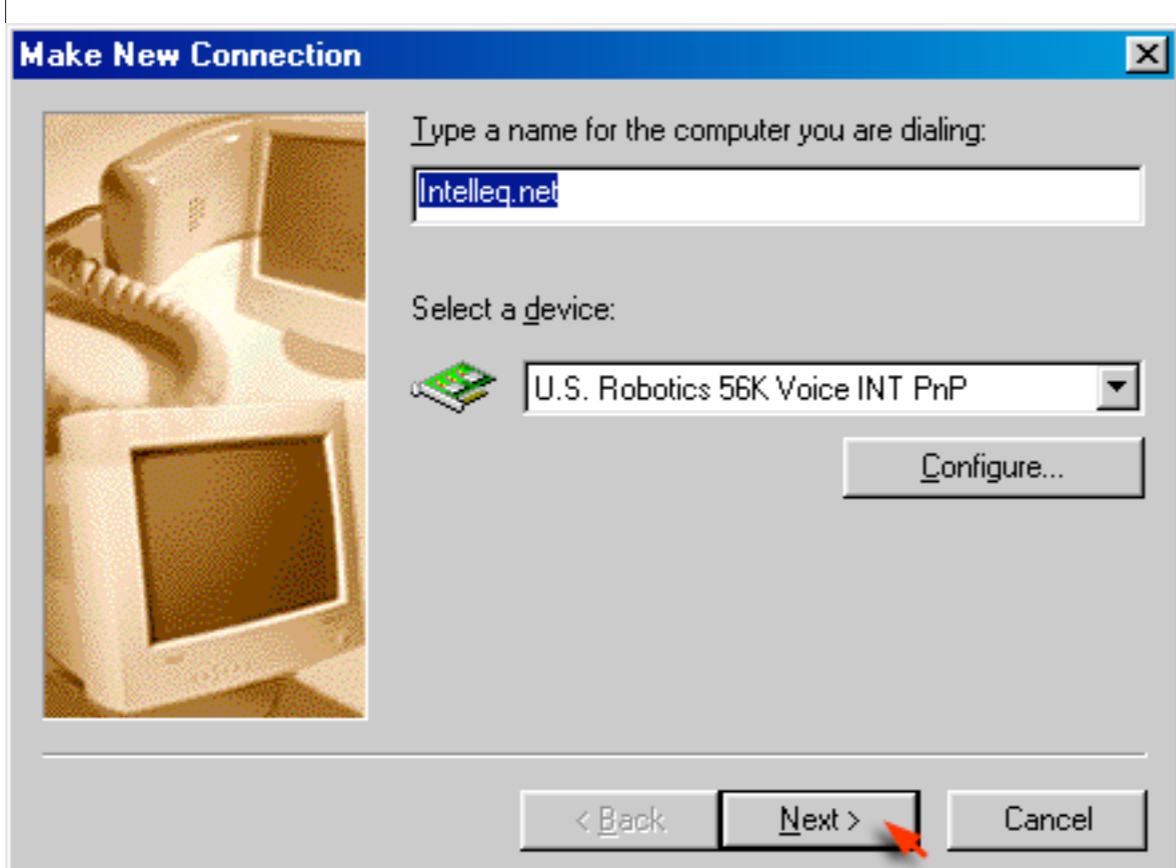
1. Double-click the icon marked "My Computer".



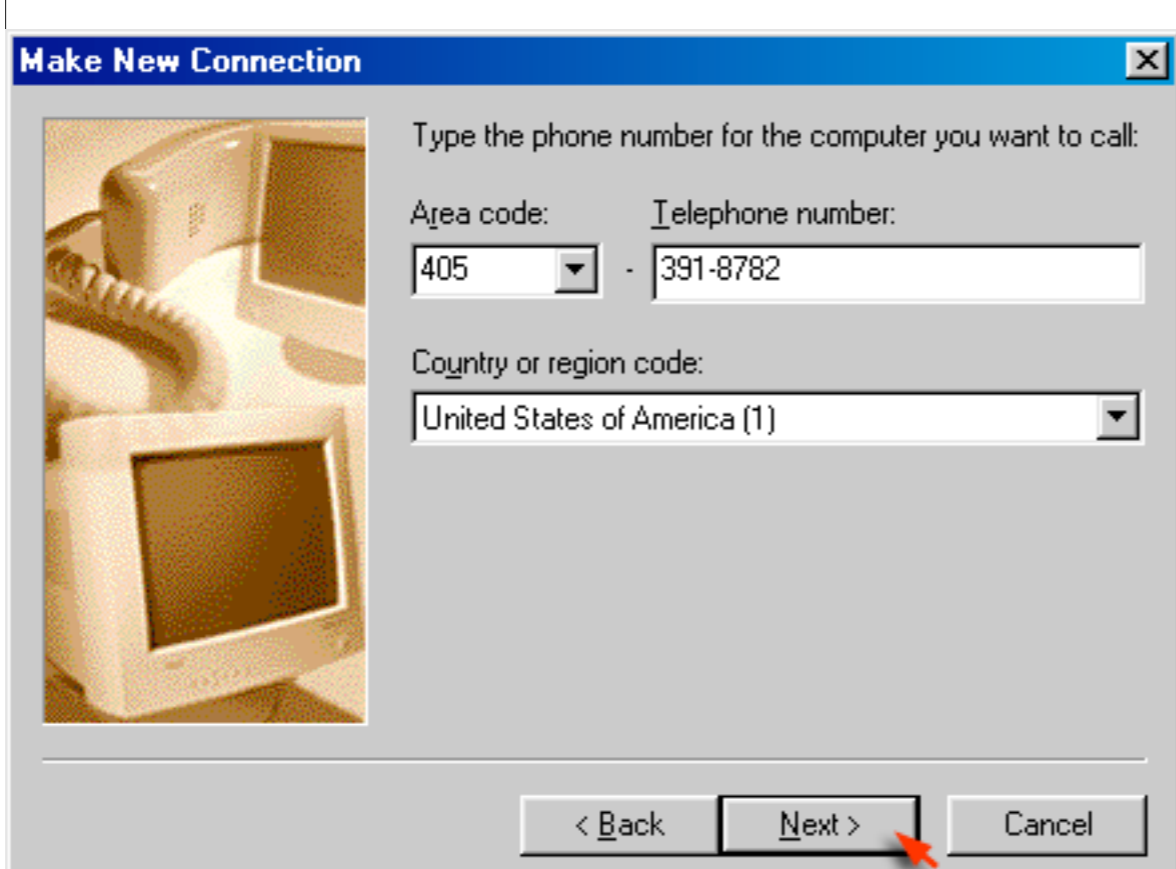
2. On this screen, double-click on "Dial-Up Networking".



3. Here, you want to double-click on "Make New Connection".



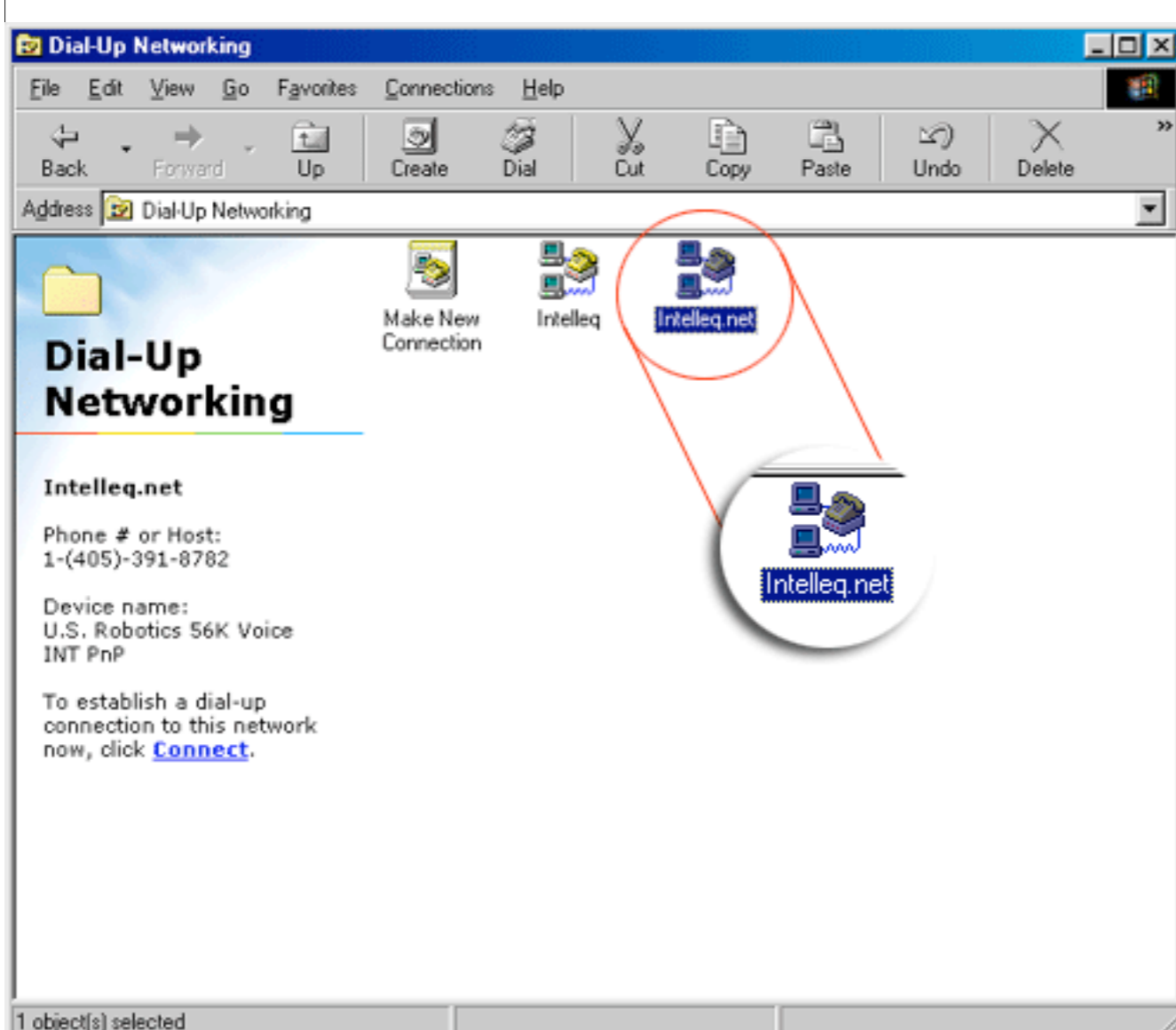
4. On this screen, enter a name for the new connection. We suggest entering *Intelleg.net*. After that click "Next".



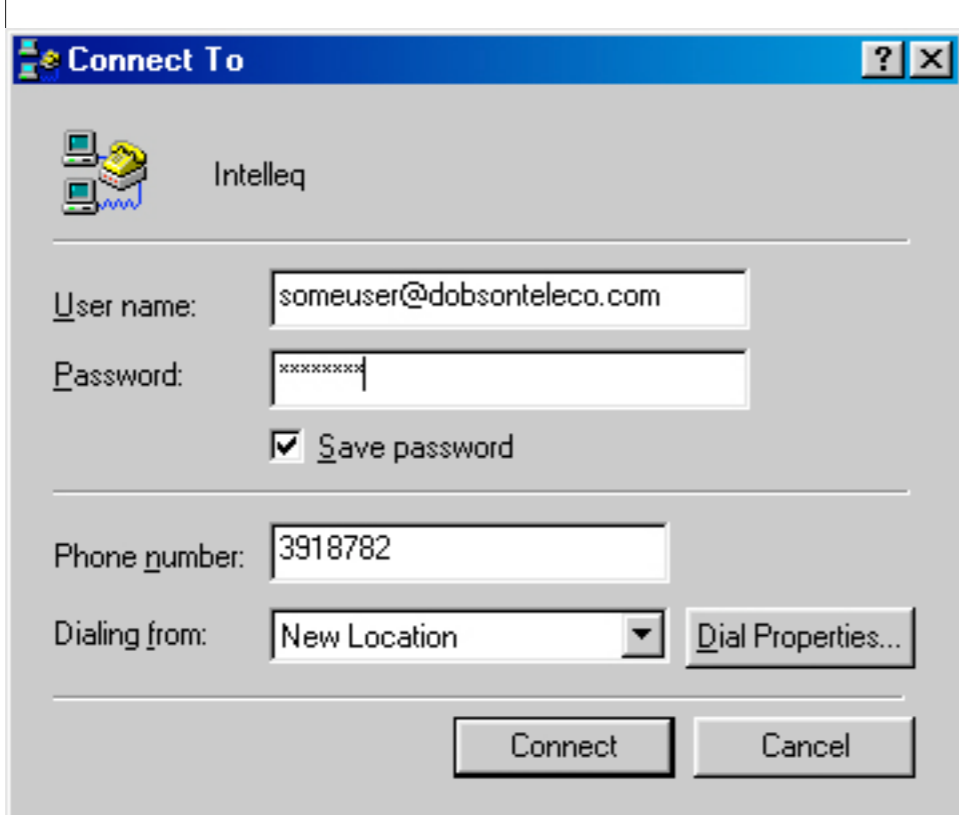
5. Here, enter the local access number that you will dial. After you have done that, click "Next".
If you don't know your local number, [click here](#) for a full listing of our access numbers.



6. This is the end. Just click "Finish" and you're done!



7. You should end up here when you click "Finish". Just double-click the *Intelleg.net* icon to connect.



8. Once here, verify that the username and password are entered correctly and click "Connect" to get online.